



# OMNIDECK PRESENTATION

---

Prepared by Tony Booth

August 2019

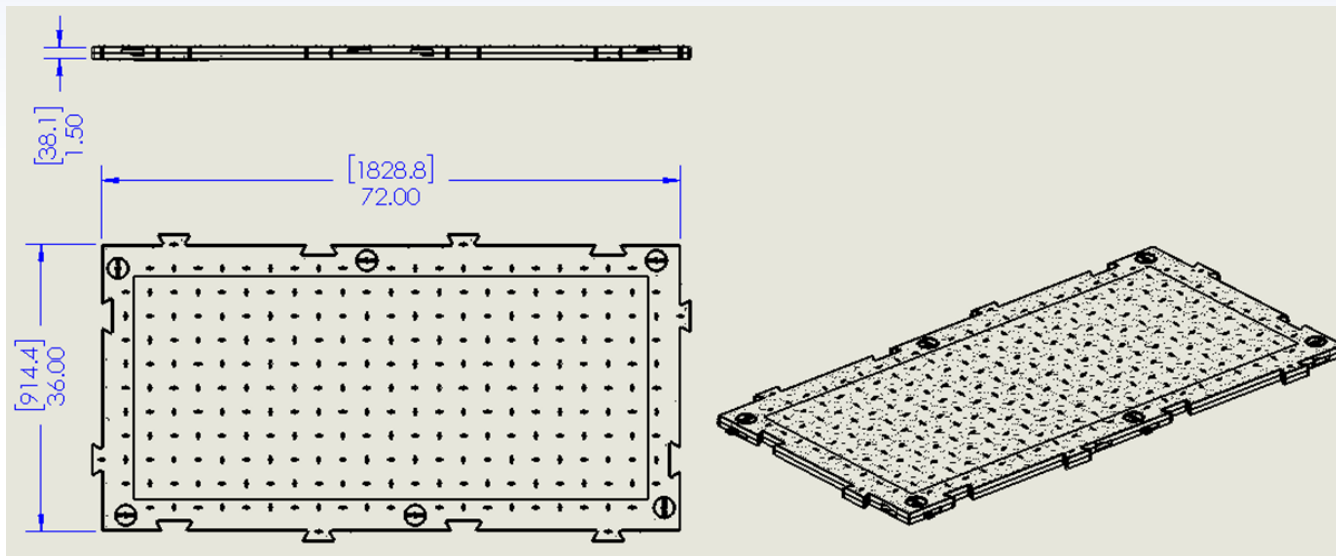
[www.signaturecorp.com](http://www.signaturecorp.com)

# GLOBAL SPORTING EVENTS



# TECHNICAL DATA

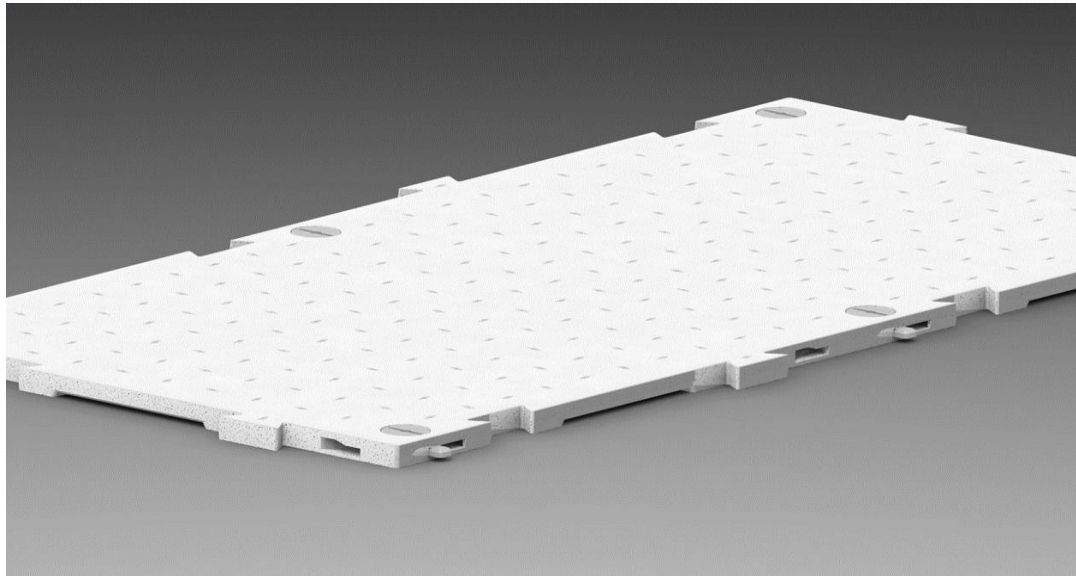
- Manufactured with virgin HDPE plastic
- 27.22 kilos per panel (60lbs)
- Each panel measures 1.830m x 0.914m (6ft x 3ft)
- 648 pieces per 40ft HC container
- 868 pieces = 1451m<sup>2</sup> on UK & EU lorries (31 pieces per pallet x 28 spaces)
- 648 pieces = 1083m<sup>2</sup> per 40ft HC containers (27 pieces per pallet x 24 pallets)
- Supports loads up to 600psi = 42kg/cm<sup>2</sup>
- UV resistant
- Nylon cam locks



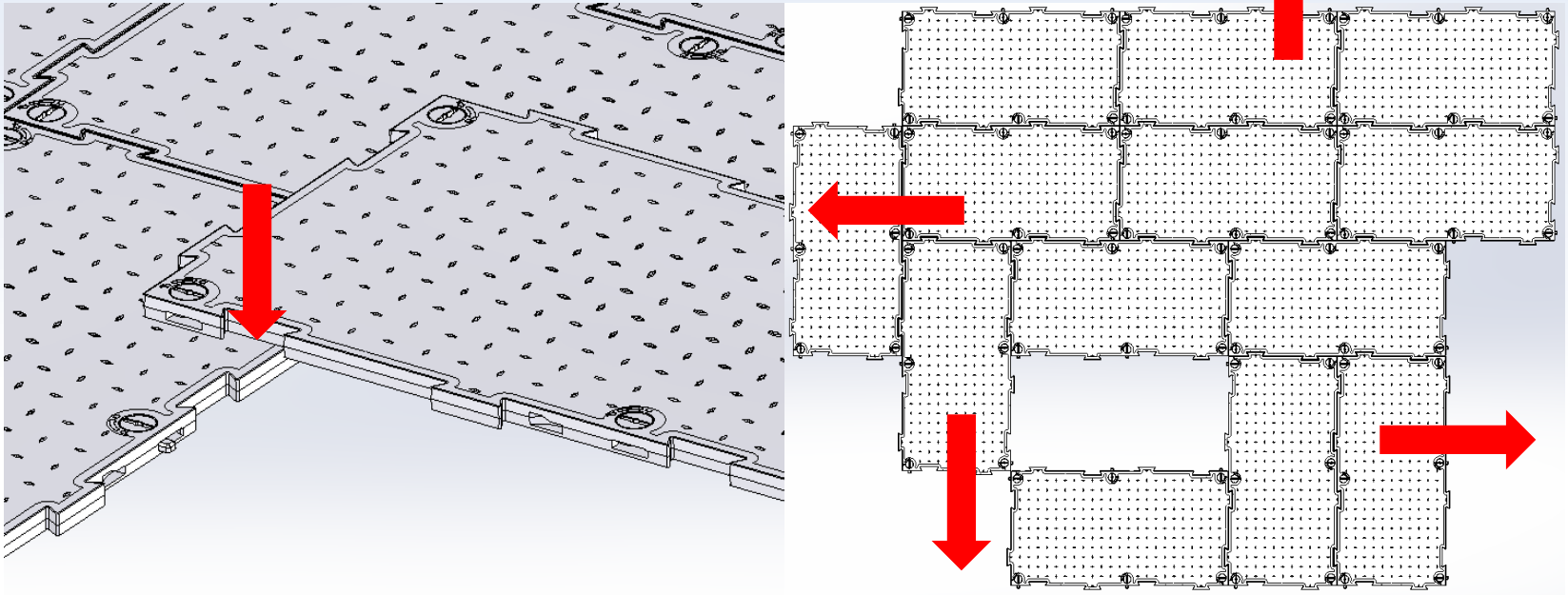
\*subject to ground conditions

# OMNIDECK GOALS

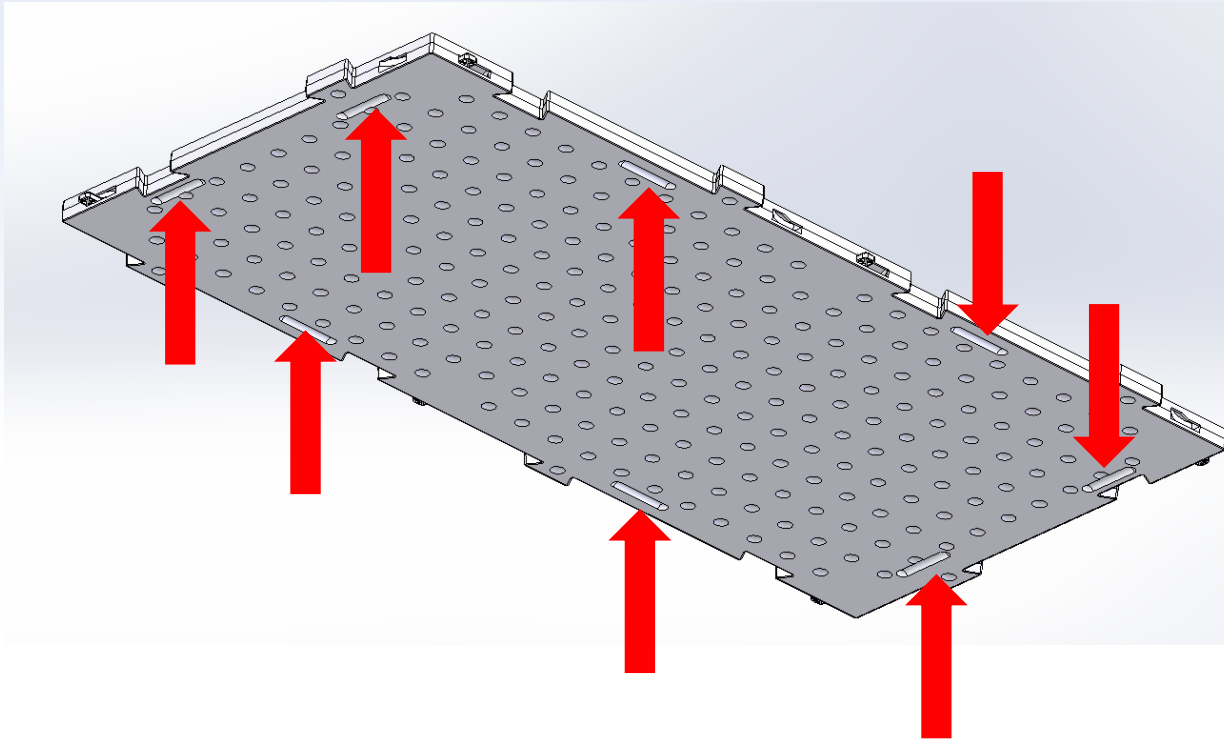
- Stronger panel
- Stronger internal ribbing design
- Stronger cam lock system
- More even load distribution across each panel (hexagon ribbing system as opposed to linear squares of ribbing inside)
- Lighter (without losing strength but in fact increasing strength)
- More efficient to transport in containers
- More efficient to transport on lorries/trucks
- Less storage space on site for end user owners
- One piece “size” (ArmorDeck and Terratrak Plus are essentially two pieces which are laid down together to lay two pieces at a time)
- Easier to handle so therefore more ergonomic (we have hand holes on the underneath)
- Nesting tread pattern with the underside when stacked
- Faster to install



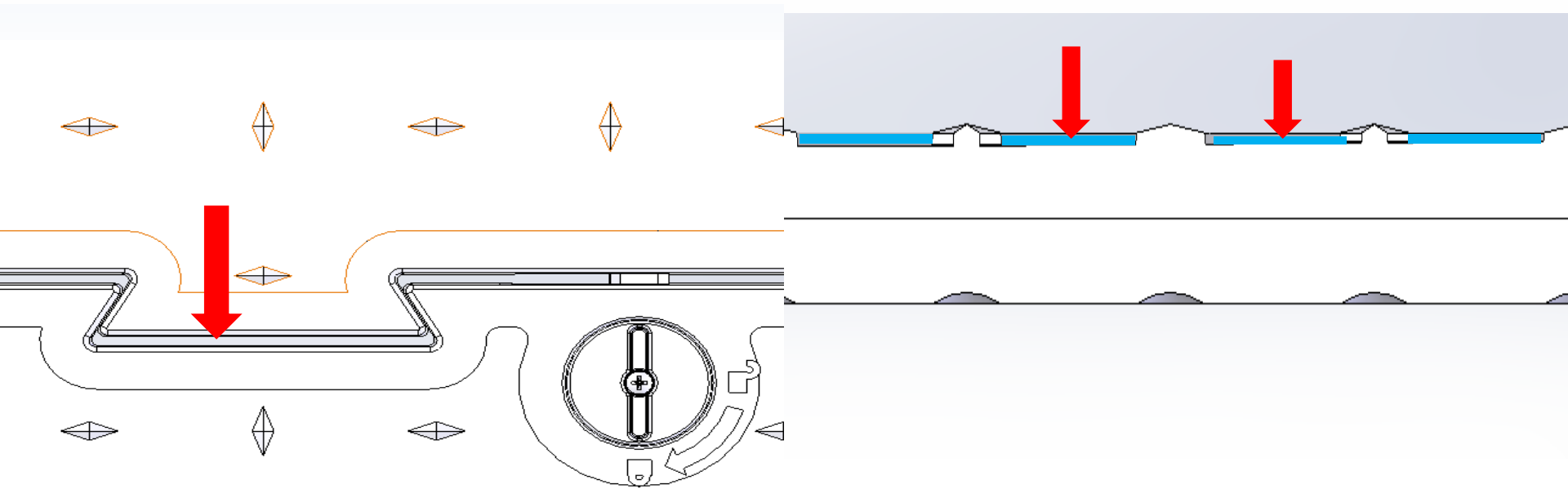
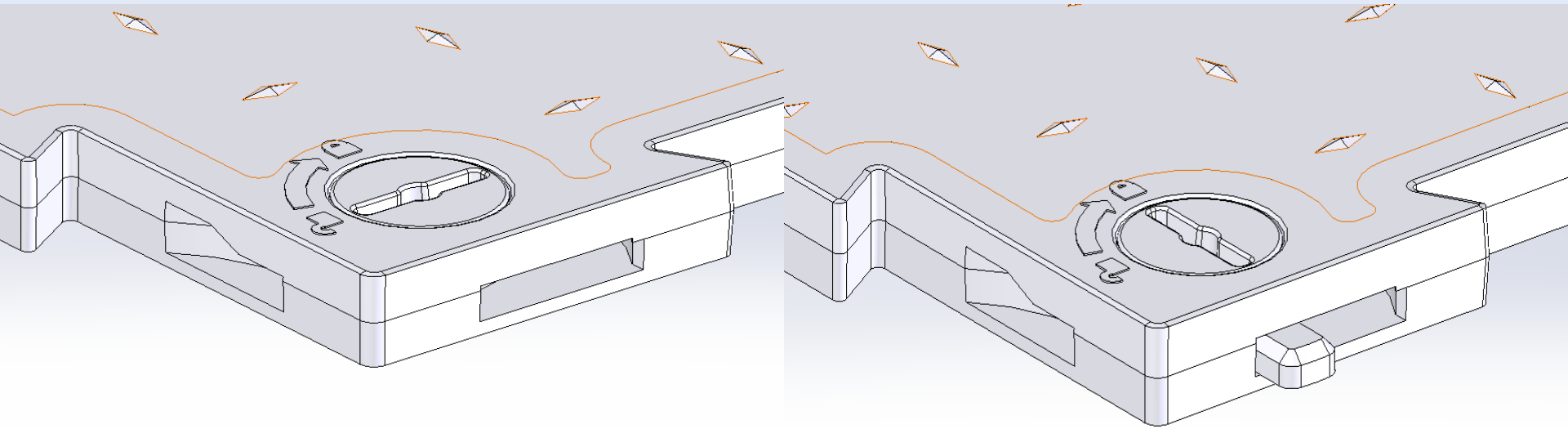
# FEATURES & BENEFITS



# FEATURES & BENEFITS



# FEATURES & BENEFITS



# SPECIFICATIONS



## OMNIDECK™

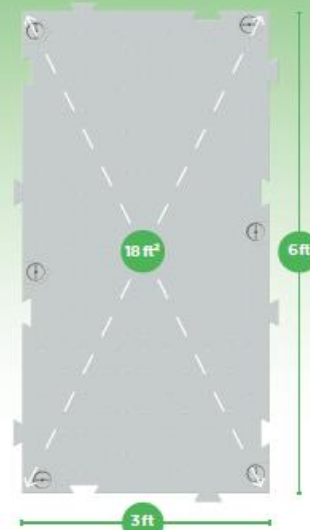
### Specification sheet

#### Omnidirectional Installation

Innovative design allows fast-deploying stadium turf protection.



<b>Operationally Efficient</b>	Schedule more events and spend fewer hours on setup while protecting people, equipment and your turf
<b>Next-Gen Protection</b>	<ul style="list-style-type: none"> <li>• Weight load up to 600 psi or 86,400 psf, depending on subsurface conditions</li> <li>• High Density Polyethylene (HDPE)</li> <li>• Five-year UV package</li> </ul>
<b>Easy Access</b>	1 Ability to remove single panel for access. Easily build system around walls, goal posts and more
<b>Edge Ramps</b>	2 Install 3' ADA compliant ramps along edges to meet disability requirements
<b>Safety</b>	3 Integrated hand holds make panels easy to carry and safe to store. Panels nest on pallet to prevent sliding
<b>Shipping Information</b>	48 ft. flatbed truck: ..... 840 panels 40 ft. ISO shipping container: ..... 648 panels 20 ft. ISO shipping container: ..... 312 panels UK lorry: ..... 868 panels
<b>Slip Resistant Surface</b>	4 Tread on top of panel increases traction
<b>Stable &amp; Secure Locks</b>	5 <ul style="list-style-type: none"> <li>• Rotating arm locks along all sides to secure panels</li> <li>• Visible lock indicators</li> <li>• T-bar tool</li> </ul>
<b>Colors</b>	Available in translucent; custom colors available
<b>Warranty</b>	3-year manufacturer's limited warranty, including cam locks
<b>Operating Temperature</b>	-20 degrees to 140 degrees Fahrenheit (-29 to 60 Celsius)
<b>Fire Rating</b>	UL94HB, EN ISO / 1925 - 2: 2010



Size ..... **6' L x 3' W x 1 1/2" H**  
 (183 x 91 x 3.81 cm)  
 Weight ..... **50 lbs.** (22.7 kg)  
 Usable surface area ..... **18 ft²** (1.67 m²)



# INTERNAL 1/2 PANEL

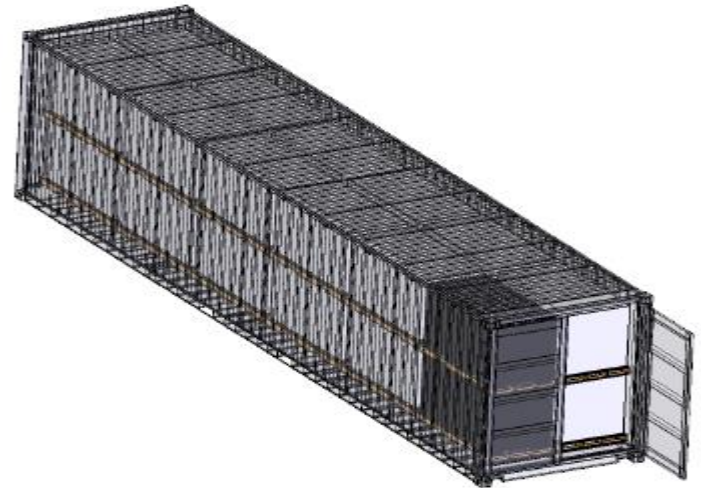
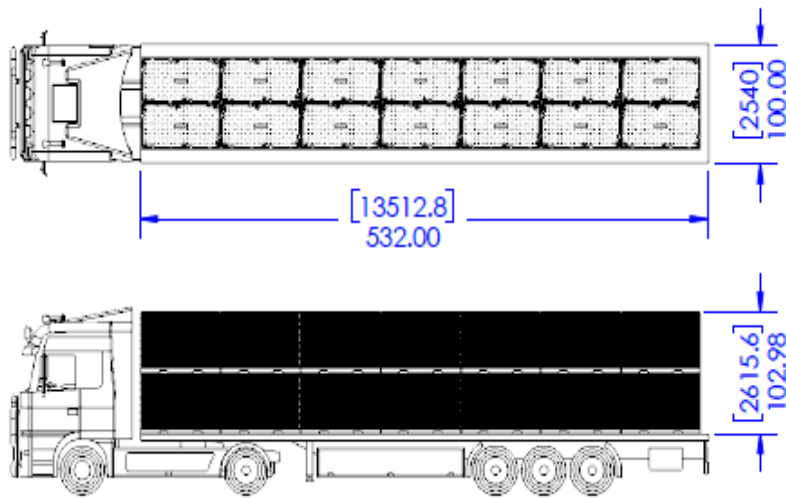


1/2 panel showing internal structure

# LOGISTICS INFORMATION

UK & EU lorry loaded = 1451m<sup>2</sup>

Container loading = 1083m<sup>2</sup>





# NATURAL TURF DEMONSTRATION





# ARTIFICIAL TURF DEMONSTRATION





# INSTALL PICTURES





# INSTALL PICTURES



# INSTALL PICTURES





# INSTALL PICTURES





# INSTALL PICTURES





# INSTALL PICTURES





# INSTALL PICTURES





# INSTALL PICTURES



**THANK YOU!**