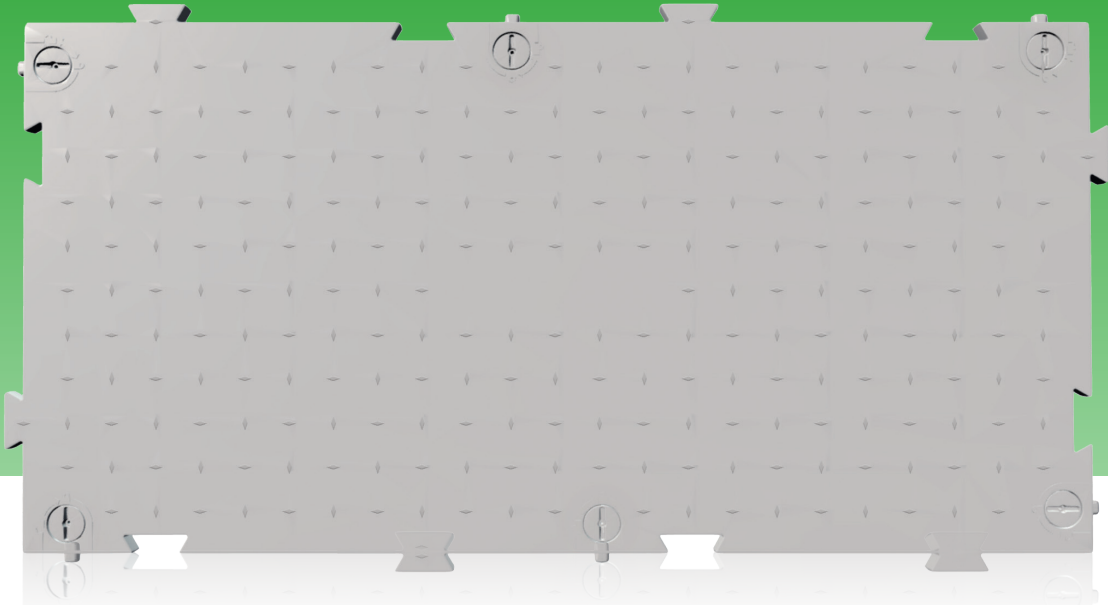


INTRODUCING

OMNIDECK™

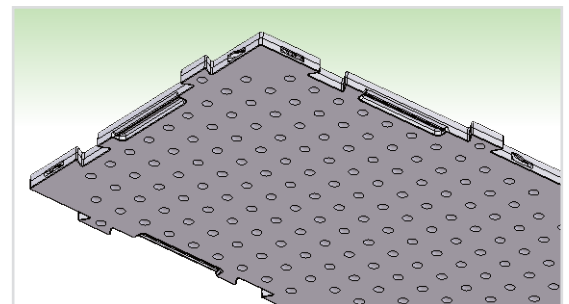


Heavy-Duty Turf Protection System

FAST TO DEPLOY, EASY TO STORE, AND PROTECTS YOUR TURF

OmniDeck™ is the fastest deploying stadium turf and ground protection system, capable of deploying over 1,300 m² per hour with only 12 people (10,000 m² field in 8 hours). This is possible because, while durable enough to support heavy weights without damaging the natural grass or synthetic turf beneath, OmniDeck™ tiles are intuitive to install and can be carried easily by two persons. Each tile has built-in handholds for safety and convenience.

OmniDeck™ tiles are designed to interlock in parallel or perpendicular to each other for omnidirectional configurations. The “puzzle” pieces can be used to move around objects or fit nonstandard spaces. A strong latching mechanism is integral to the design with no loose pieces.



NATURAL TURF SAFE

- Closed bottom design distributes weight evenly, preventing damage to the surface below
- Small indentions throughout the bottom to promote airflow to turf
- Translucent material allows sunlight to reach turf

OMNIDECK™

Heavy-Duty Turf Protection System

Allows for Thermal Expansion

The interlocking puzzle-piece design accommodates temperatures from 20° to 140°F without the need for expansion joints

Product Durability / Longevity

- Sealed design to eliminate water / debris intrusion
- Built-in UV stabilizers to reduce sun damage
- No thin walls or overhangs to eliminate cracking or corner breakage
- High impact, solvent-resistant polymer, won't absorb or degrade with chemical exposure
- Anti-static additives reduce static build-up

PRELIMINARY SPECS

Module Size

6' L x 3' W x 1 1/2" H
(1.8 m x 0.9 m x 3.8 cm)
Usable Surface Area: 18 ft² (1.67m²)

Material

- High-Density Polyethylene (HDPE) post-industrial recycled plastic
- Polycarbonate Cam Locks

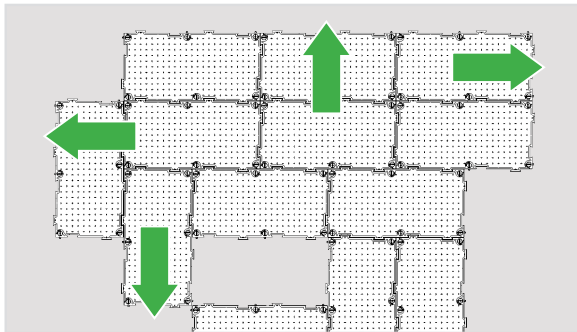
Weight

60 lbs (27.2 kg)
Per ft²: 3.3 lbs (1.5 kg)
Per m²: 16.3 kg (36 lbs)

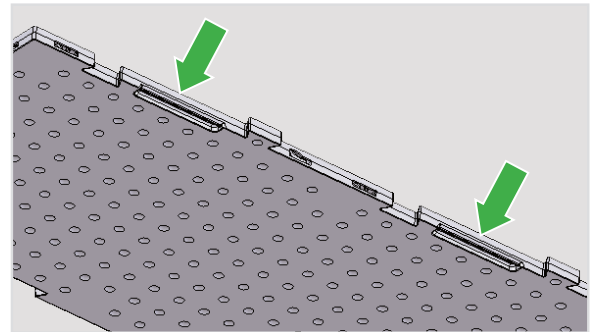
Weight Loading

500 PSI

OMNIDIRECTIONAL LAYOUT



ERGONOMIC HANDHOLDS



INTEGRAL CONNECTION HARDWARE

